

STELLAR AGGRESSOR™

23000 OTR



Efficient. Effective. Tough. The Stellar 23000 OTR series tire service crane fits the need of OTR tire service technicians who need something that can handle it all. The 23000 OTR series is the one to turn to when you need a reliable and dependable service truck. Without the tire manipulator the crane has a maximum lift capacity of 23,000 lbs. @ 10'. The 315-degree crane rotation is carried out through a turntable bearing with a high torque planetary gear reduction system. The hexagon-shaped secondary and extension substantially increase boom strength over competitive square-shaped booms, ensuring solid performance.



The performance of the 23000 OTR series can be refined by the addition of the TM12154 tire manipulator. The TM12154 increases versatility and productivity while providing a safe method to handling any OTR tire up to and including a 12,000 lb., 154" tire.



The 23000/TM12154 is designed to perform in mine and construction sites worldwide. The unique parallelogram design gives the TM12154 clamping widths of 48" to 154". The TM12154 also offers 360-degree body and 90-degrees of pad rotation. The features of the 23000/TM12154 help create one of the industries' most advanced tire manipulating machines.

Designed & Manufactured
in the USA

STELLAR®
INDUSTRIES INC.

23000 OTR Series

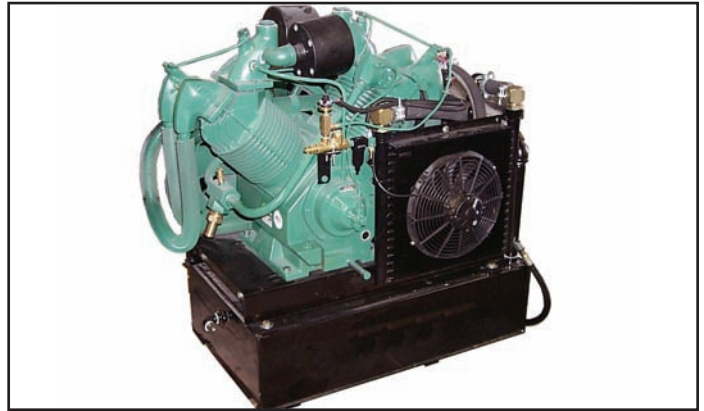
STELLAR AGGRESSOR™ 23000 OTR



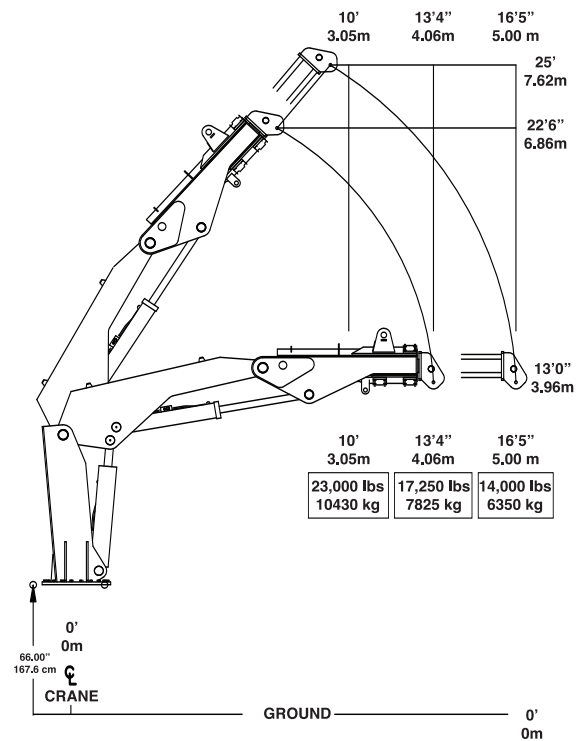
The 23000 OTR series truck has a rugged 20' heavy duty OTR body with 85 cubic feet of storage space. Each underbody compartment comes standard with slide top doors equipped with stainless steel automotive style slam latches. The storage compartment shown below is the main working compartment on the 23000/TM12154. It offers hose reels, a FLR, and tool storage at bed level and close to the working area.



The Stellar exclusive radio remote control system offers precise, smooth, multi-function crane operation. The paddle handle remote control box allows the crane operator to engage multiple crane functions with the same precision as manual controls. This system comes standard on all 23000 cranes.



Stellar's model SHD-245 air compressor is designed to meet the heavy duty OTR tire service industry. The industrial 4 - cylinder, 2 - stage compressor is powered by a hydraulic motor and outputs 110 CFM @ 175 PSI.



The chart below shows the lifting capacities and reach for the 23000 crane **without** the TM12154. TM12154 has a lifting capacity of 12,000 lbs.



190 State Street
 Garner, Iowa 50438
 1-800-321-3741
 Fax: 641-923-2812
 E-mail: sales@stellarindustries.com
 www.stellarindustries.com

Designed & Manufactured in the U.S.A.

*Specifications may change without notification.
 Copyright © 2008 Stellar Industries, Inc.