

STELLAR AGGRESSOR™

17000 OTR



Designed from the ground up to provide maximum lifting performance and solid stability, the Stellar® 17000 is the largest OTR crane in the industry allowed on a single axle truck. It also offers over 18' of stabilizer spread to keep you truck stable.

When mounted with Stellar's new TM7120 tire manipulator, the 17000 OTR crane can handle tires up to 123" diameter and up to 7,200 lbs. Without the TM7120, the 17000 OTR crane can lift 17,000 lbs. @ 10' and 10,000 lbs. at 17' from the centerline of the crane's rotation.



The 17000 OTR crane offers 320 degree of rotation by utilizing a top mount planetary gearbox rotation system. By top mounting the planetary gearbox, you'll experience the smooth, powerful performance of planetary drive with unsurpassed ease of service.



You will also notice that the stabilizers are a fold down style with a wide stance to give excellent stability whether mounted on a single or tandem axle chassis. This stabilizer system also offers excellent service of all cylinders and hoses.

As with all Stellar OTR cranes, the 17000 incorporates a hexagonal boom design. This boom design is well known in the industry for its excellent strength and durability.

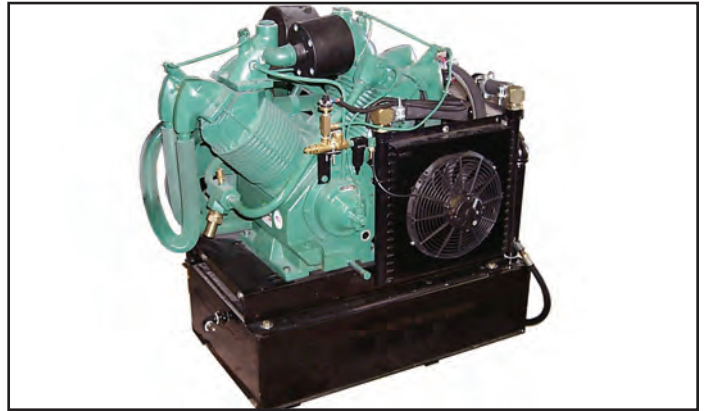
The Stellar 17000 OTR crane can be mounted on a single axle or tandem axle chassis. The single axle body is 17' long and the tandem body is 20' long.

17000 OTR Series

STELLAR AGGRESSOR™ 17000 OTR



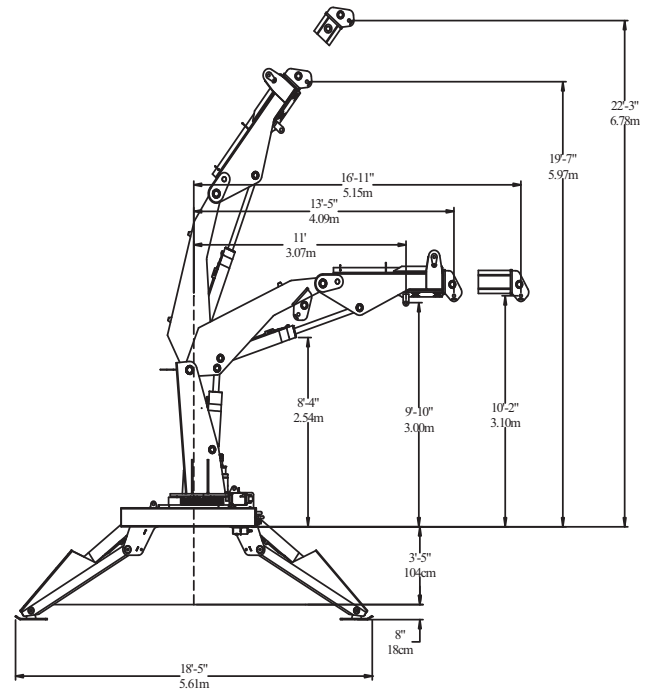
The TM7120 is capable of handling tires from 48" to 123" in diameter with a maximum weight of 7,200 lbs. It offers 300 degrees of body rotation, and either fixed or continuous rotation clamping pads. The tire manipulator offers +79 degrees to -43 degrees of articulation. The 17000 / TM7120 is capable of placing a tire on the bed as close as 51" from the back of the crane.



Stellar's model SHD-245 air compressor is designed to meet the heavy-duty OTR tire service industry. The industrial 4-cylinder, 2-stage compressor is powered by a hydraulic motor and outputs 110 CFM @ 175 PSI.



The Stellar exclusive radio remote control system offers precise, smooth, multi-function crane operation. The paddle handle remote control box allows the crane operator to engage multiple crane functions with the same precision as manual controls. This system comes standard on all 17000 cranes.



The chart below shows the dimensions and reach for the 17000 crane **without** the TM7120.

TM7120 has a lifting capacity of 7,200 lbs.



190 State Street
 Garner, Iowa 50438
 1-800-321-3741
 Fax: 641-923-2812
 E-mail: sales@stellarindustries.com
www.stellarindustries.com

Designed & Manufactured in the U.S.A.

*Specifications may change without notification.
 Copyright © 2010 Stellar Industries, Inc.